

DecoForme™

Decorative Battens





DecoForme™

Decorative Battens

Made from an E-Zero moisture-resistant MDF substrate and wrapped in decorative melamine overlay, DecoForme™ pre-finished decorative battens impart the warmth and character of timber, providing a durable and cost-effective solution.

DecoForme™ provides a warm and rich textured appearance for a wide variety of panelling, ideal for wall and ceiling applications in either a vertical or horizontal set out, creating strong directional lines that will add a striking feature to any internal space.



Typical Uses

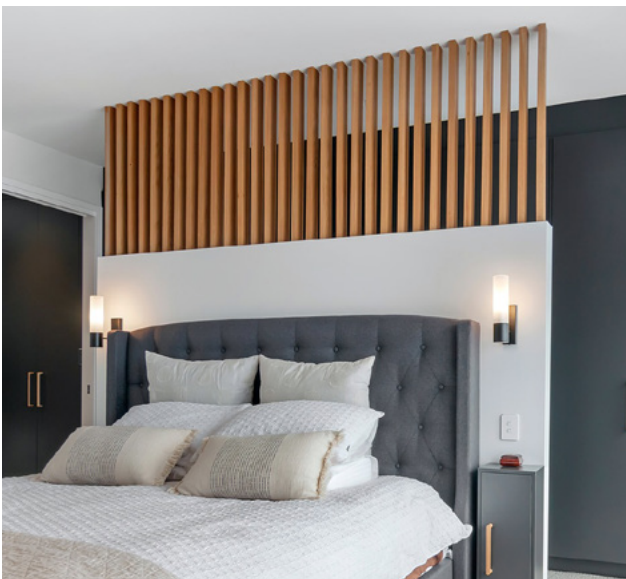
Uses include but not limited to:

- Feature walls
- Room dividers
- Head boards
- Kitchen bar fronts
- Reception counters
- Ceilings
- Stairwells
- Home Front Entry features
- Furniture



Features

- A pre-finished product with no further finishing work required
- Ready to fabricate and assemble
- Supplied in COC, PEFC, Responsible Wood and Green Tag Level A certified MR MDF E-Zero substrate
- Selected colours are also available in matching low pressure laminate and internal doors
- Group 3 fire rating – AS/NZS 3837:1998, ISO 5660-1:2015



The DecoForme Range



Honey Oak



Snowfall



Eclipse



Savanna



Sahara



Driftwood



Woodland



All colours are supplied in a 3600mm length and available in the following dimensions:

Standard Profiles:

- A. 31mm x 31mm
- B. 17mm x 38mm
- C. 31mm x 65mm
- D. 50mm x 70mm
- E. 50mm x 100mm

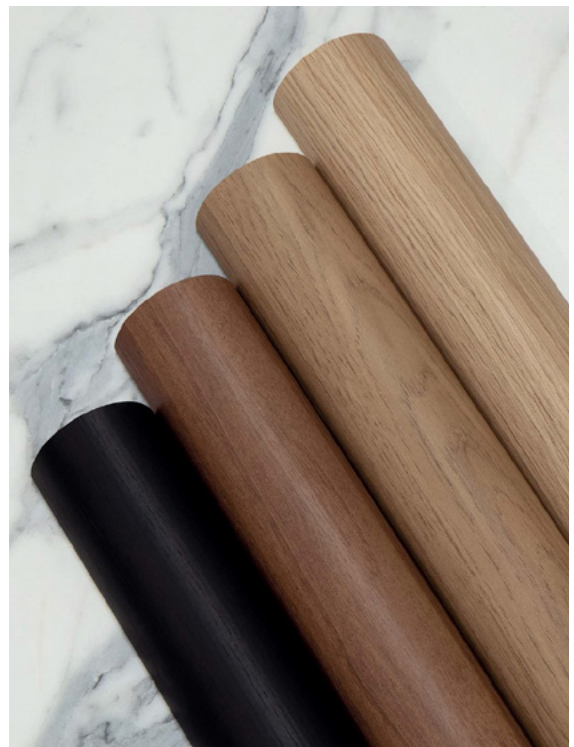
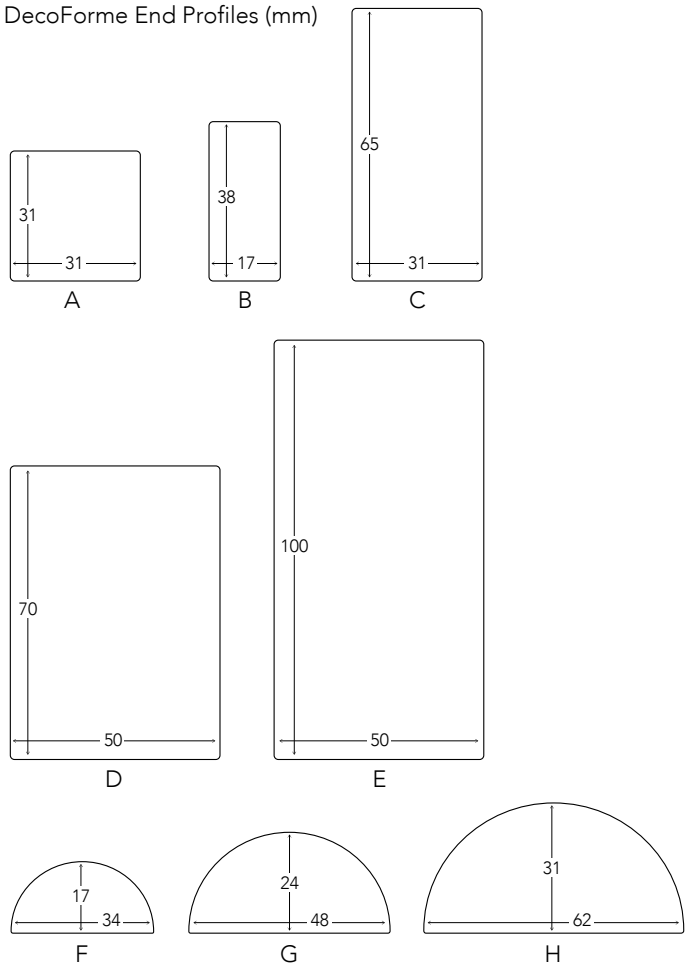
Half Round Profiles:

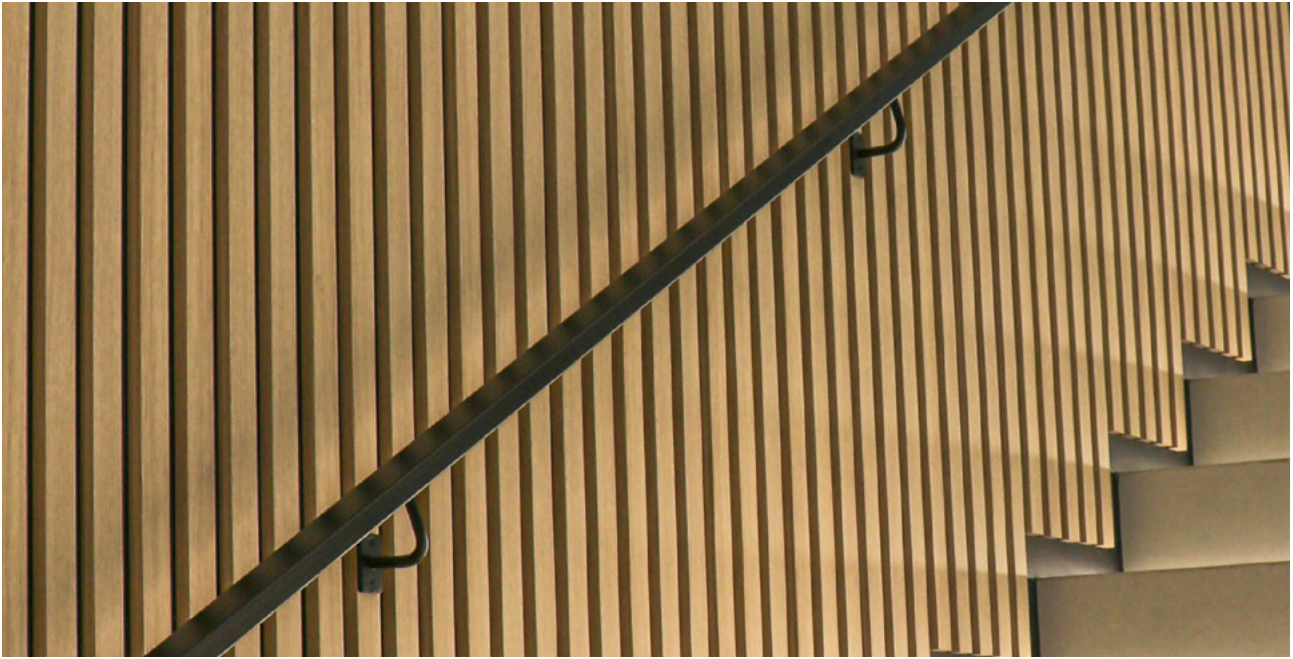
- F. 34mm x 17mm
- G. 48mm x 24mm
- H. 62mm x 31mm

Matching edge tape available.

Matching melamine backing sheets available in 3115 x 1220 x 16mm size.

DecoForme End Profiles (mm)





Fixing and Installation

DecoForme™ is designed to be easily cut and installed by any joiner, builder or weekend warrior. The MR MDF substrate is easily cut using standard wood working machinery such as a drop saw. Ensure you have a sharp fine finishing blade.

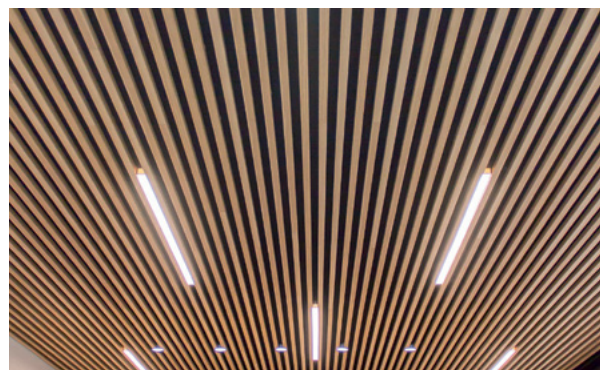
DecoForme™ is purely a decorative product and therefore the applications are wide and varied.

Hallmark does not offer a proprietary fixing system for DecoForme™ however, subject to your specific application, there are many fixing possibilities and commercially available systems. It is up to the installer to ensure that all fixing and installation is fit for purpose. Fixing methods differ depending on application, but typical installations include:

- Screw fix from the back of a panel then install the panel to the wall
- Glue fix – we recommend Gorilla FixAll High Tack Adhesive. Use Scotch Extremely Strong Mounting Tape to hold DecoForme™ in place while glue sets
- Dowel inserts each end for free standing vertical installations
- Concealed fixing options are available for applications such as suspended ceilings. Hafele Striplox Pro 23 is a good option. Visit www.decoforme.co.nz to download our Installation & Fixing Guide.



Hafele Striplox Pro 23

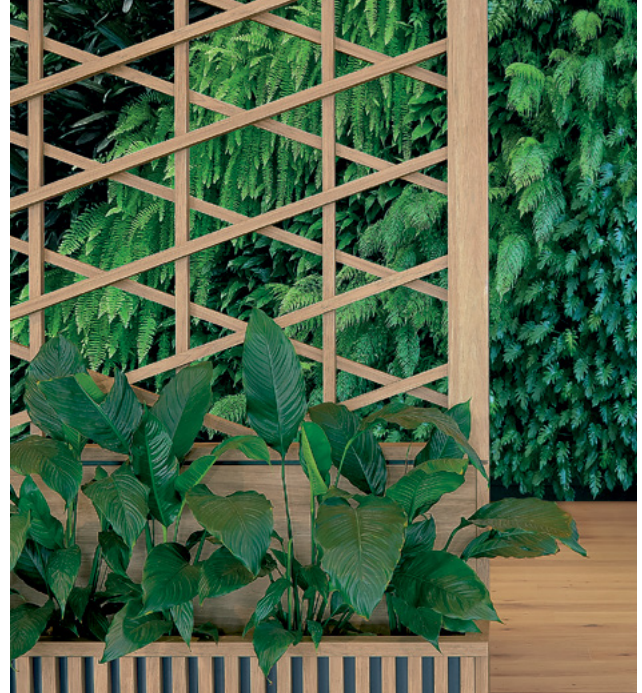




Limitations & Design Considerations

- DecoForme™ is a non-structural product developed for decorative purposes only.
- Strictly for internal use, not for use in exterior applications including alfresco areas.
- Should not be used in wet areas such as bathrooms or environments of high humidity.
- Can be cut to length, however should not be cut in a lineal direction. It is recommended to protect cut edges from moisture ingress by either using a clear sealer or by applying edge tape.
- Where DecoForme™ may be susceptible to high traffic flow, quality or appearance may be impaired.
- Wet mopping and vacuum cleaners may cause damage to DecoForme™ at floor level. Consider incorporating a minimum 50mm clearance between the floor and the DecoForme™ batten.





Care and Maintenance

DecoForme™ should be handled with the same care as a veneered or painted surface would be. DecoForme™ may be wiped down regularly in the direction of the grain; use a damp, soft non-abrasive cloth and ensure care is taken not to rub or wipe too hard. Dry using a soft cloth so as not to leave any residue on the product.

Do not use any of the following on DecoForme™ products: Commercial Cleaning Products, Abrasive Cleaners, Scouring Pads or Abrasive Papers, Acids and Alkalis, Solvents, Thinners, Turpentine (Turps), Ammonia, Bleach, Acetone, Easy-Off BAM!, M.E.K. or any other cleaning agents containing organic solvents or the above mentioned products.

The colours and details shown in this brochure are to the highest standards in printing, however, they should only be used as an indication of actual product colour. DecoForme™ swatches and samples represent a small area of the overall colour structure.

Warranty

The products supplied will, under normal use, be free from defects arising from manufacture of the product. The warranty period for DecoForme™ products for use in residential premises is five (5) years. Visit decoforme.co.nz for full warranty terms and conditions.

hallmark
decorative

decoforme.co.nz

DecoForme™ is marketed and distributed by Hallmark Decorative, a division of Hallmark Group Limited.